

## Lesson 5

### Fact Sheet - Cordal Wind Farm



Image source: The Irish Times, 2021. Greencoat Renewables to acquire Kerry wind farm  
<https://www.irishtimes.com/business/energy-and-resources/greencoat-renewables-to-acquire-kerry-wind-farm-1.4495762>

#### Location:

Located between the villages of Cordal, Co Kerry and Ballydesmond, Co Cork, Ireland and is located in a remote upland region, much of the site is a forested area.

#### Owner:

Greencoat Renewables

#### Date:

2018

#### Site area:

Not available

#### Number of Turbines:

28 turbines

#### Energy Stats:

- **Total capacity:** 89.6 MW
- **Annual energy generation:** Enough to power at least 75,000 energy efficient homes

#### Find it on Google Maps:

<https://maps.app.goo.gl/hLtN98DfFdPn6BBG8>

#### Grid reference for wind farm on Scoilnet maps:

R 11 08

## Lesson 5

### Fact Sheet - Galway Wind Farm

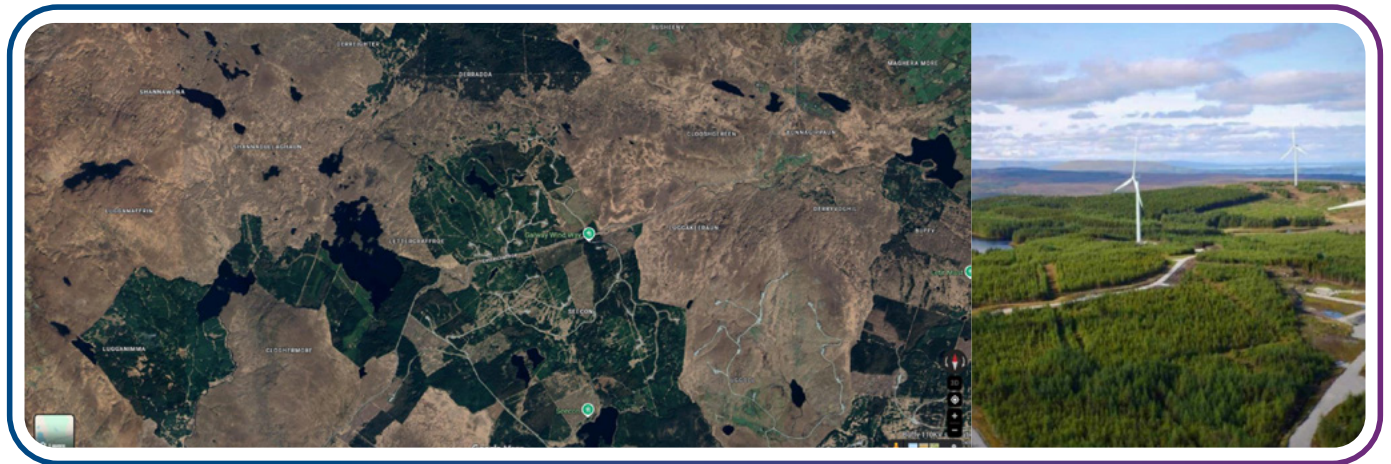


Image source: The Irish Times, 2018. 'The next 10 years are going to see change that we probably cannot imagine'  
<https://www.irishtimes.com/news/environment/the-next-10-years-are-going-to-see-change-that-we-probably-cannot-imagine-1.3560361>

#### Location:

Cloosh Valley, Connemara, County Galway, Ireland

#### Owner:

SSE Renewables and Greencoat Renewables

#### Date:

Construction began in 2015

#### Site area:

Approximately 4,500 hectares

#### Number of Turbines:

58 turbines

#### Energy Stats:

- **Total capacity:** 174 MW
- **Annual energy generation:** Enough to power ~266,000 electric cars for a full year of driving

#### Find it on Google Maps:

<https://maps.app.goo.gl/vbf1GnYj5aAxJ6jX8>

#### Grid reference for wind farm on Scoilnet maps:

M 07 38

## Lesson 5

### Fact Sheet - Grousemount Wind Farm



Image source: Grousemount Wind Farm.  
<https://www.esbinternational.ie/case-studies/details/grousemount-wind-farm>

#### Location:

County Kerry, Ireland

#### Owner:

Developed by ESB through Hibernian Wind Power and Kerry Wind Power

#### Date:

Construction began in 2017, fully operational by 2020

#### Site area:

Approximately 4,000 hectares

#### Number of Turbines:

38 turbines

#### Energy Stats:

- **Total capacity:** 116.2 MW
- **Annual energy generation:** Equivalent to the annual energy use of over 1,000 schools

#### Find it on Google Maps:

<https://maps.app.goo.gl/ayQqnJXNZcoSNzH59>

#### Grid reference for wind farm on Scoilnet maps:

W 09 69

## Lesson 5

### Fact Sheet - Gusta Gaoithe Wind Farm



Image source: Enerco Energy  
<https://www.enercoenergy.ie/ardderoo-wind-farm/>

#### Location:

Arderoo, County Galway, Ireland

#### Owner:

Amazon (100%)

#### Date:

2023

#### Site area:

1,493 hectares

#### Number of Turbines:

27 turbines

#### Energy Stats:

- **Total capacity:** 101 MW
- **Annual energy generation:** Equivalent to running every washing machine in Ireland once a day for a full year

#### Find it on Google Maps:

<https://maps.app.goo.gl/LFnTUmcm1ZB9UDJM6>

#### Grid reference for wind farm on Scoilnet maps:

M 11 35

## Lesson 5

### Fact Sheet - Knockacummer Wind Farm

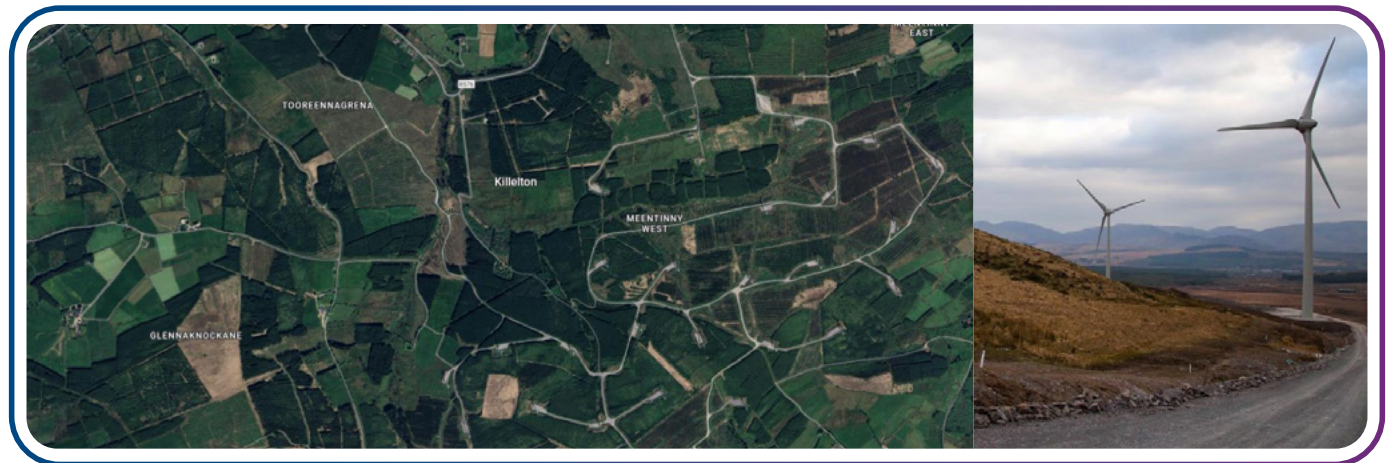


Image source: Knockacummer & Glentane Wind Farm  
<https://datumbce.ie/project/knockacummer-glentane-wind-farm>

#### Location:

Meentinnny Co. Cork

#### Owner:

Greencoat Renewables

#### Date:

2015

#### Site area:

Not available

#### Number of Turbines:

40 turbines

#### Energy Stats:

- **Total capacity:** 100 MW
- **Annual energy generation:** Can power up to 85000 homes

#### Find it on Google Maps:

<https://maps.app.goo.gl/jhRVhwD3UiQTSG6j8>

#### Grid reference for wind farm on Scoilnet maps:

R 22 11

## Lesson 5

### Fact Sheet - Yellow River Wind Farm



Image source: Barry Andrews

[www.irishtimes.com/business/2025/03/31/barry-andrews-wind-energy-can-deliver-clean-electricity-support-20000-new-jobs-and-lower-energy-bills/](http://www.irishtimes.com/business/2025/03/31/barry-andrews-wind-energy-can-deliver-clean-electricity-support-20000-new-jobs-and-lower-energy-bills/)

#### Location:

Rhode, County Offaly, Ireland

#### Owner:

SSE Renewables

#### Date:

Began in October 2022

#### Site area:

Approximately 1,002 hectares

#### Number of Turbines:

29 turbines

#### Energy Stats:

- **Total capacity:** 101 MW
- **Annual energy generation:** Equivalent to the energy needed to brew 1.3 billion cups of tea each year

#### Find it on Google Maps:

<https://maps.app.goo.gl/G4bdACtAm8Yp4hz78>

#### Grid reference for wind farm on Scoilnet maps:

N 48 36